

County of Santa Clara

Office of the Sheriff

55 West Younger Avenue
San Jose, California 95110-1721
(408) 299-2101

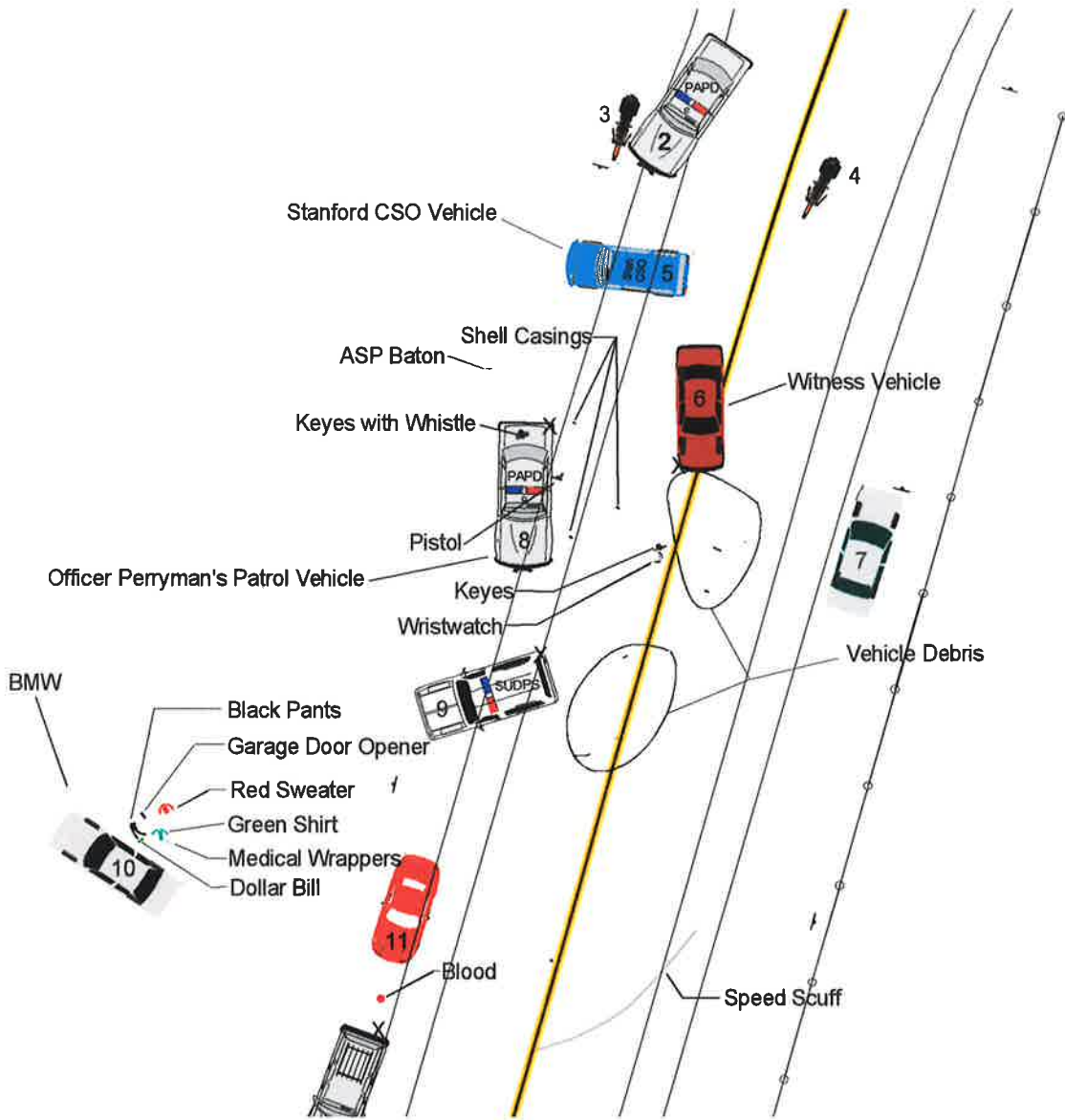


Laurie Smith
Sheriff

OFFICER INVOLVED SHOOTING S/O CASE 02-079-0220W

LIST OF VEHICLES IN SCENE DIAGRAM (by vehicle number)

1.	Chev. Impala	Silver		
2.	PAPD Ford	White		
3.	PAPD Motorcycle	Blk/Wht		
4.	PAPD Motorcycle	Blk/Wht		
5.	Chev Astro	Blue		(SUDPS CSO Van)
6.	Toyota Camry	Burgundy		(witness)
7.	Volvo 850	Silver		
8.	PAPD Ford	White		(PAPD Perryman)
9.	SUDPS Tahoe	White		
10.	BMW 540	Silver	None	(suspect vehicle)
11.	Mazda Miata	Red		
12.	Volvo Wagon	Silver		
13.	Volvo 750	White		
14.	Jeep Cherokee	Gold		
15.	PAPD Ford	Blk/Wht		
16.	Infinity QX4	Black		
17.	Lexus ES3000	Grey		
18.	Toyota 4-Runner	Silver		
19.	Lexus GS300	Black		
20.	Honda Civic	Silver		
21.	Ford Explorer	White		
22.	Subaru Outback	Blue		
23.	Honda Odyssey	Grey		
24.	Plymouth Acclaim	Red		
25.	Saturn Sedan	Grey		
26.	SUDPS Ford	White		(SUDPS Bell)
27.	Sheriff's Evid. Truck	White		
28.	Volvo S-80	Gold		



NOTE: an "X" on v

Sheriff's Office Internal Affairs Case IA02-07

Attachment #3:

The dispatch tape begins with CSO coming on the Palo Alto frequency to advise of the suspicious person he had seen among the parked vehicles. The unrelated Palo Alto Police broadcasts were not included.

Palo Alto, G-32.

PA Comm: Go ahead.

10-66 subject walking along the cars on Stanford Avenue.

PA Comm: Where on Stanford Avenue?

In the area of J Serra (common term for Junipero Serra Blvd.) The reason I'm calling is because he has red shoes on which matches the subject that committed one of our other 460 autos a while back.

PA Comm: Your call sign again?

G-32.

PA Comm: 10-4 and what direction of travel?

I turned around and now he's gone again. I'll have to try to locate him. He was heading towards J Serra from the lower portion of Stanford Avenue.

PAComm: What race?

Hispanic male, wearing black trousers, red shirt, long sleeve shirt and red shoes.

Bell, Q-2: (can not understand)

PA Comm: Q-2

Subject has facial hair. Still UTL. And, he possibly ducked inside the bushes.

PA Comm: 10-4, what's your 10-20 so Q-2 can make contact with you?

I'm adjacent to the fire lane on Stanford Avenue it's near the intersection of J Serra and Stanford Avenue.

PA Comm: 10-4.

Subject reappeared now. He's walking back up the car, the row of cars again.

PA Comm: 10-4.

Bell: 10-97.

PA Comm: 10-4

Q-2, G-32. be advised he's gonna be adjacent to the first two SUVs on your right as you pass the light.

Bell: 10-4.

Q-2, he's right on the opposite side of those vehicles.

Bell: Check.

Up to this point, miscellaneous radio traffic is interspersed with this detail.

PA Comm: Code 22 on the main (for this incident).

Perryman: For the Q Units, I've got him.

Bell: 10-4, I see ya.

PA Comm: Call sign?

Perryman: 37, Code 3 fill – struggle heard in the background.

Perryman: Code 3 fill – struggle heard in the background.

PA Comm: Q-2, are you with her?

Bell: Code 3, get me a fill – struggle heard in the background

PA Comm: Q-2, your 10-20?

Bell: Code 3 fill – struggle heard in the background.

Perryman: Shots fired.

PA Comm: Shots fired? Confirm?

Perryman: 37, I need a supervisor. Shots fired. He is in the ditch and I need a medic and I need a medic for me.

PA Comm: Radio copy.

Time elapsed for above broadcasts: 4 minutes, 53 seconds.

Time elapsed from Officer Perryman saying, "I've got him" to first "Code 3 fill" request: 9 seconds.

Time elapsed from Officer Perryman saying, "I've got him" to "Shots fired": 1 minute, 11 seconds

Tape continues with responding units and establishing scene perimeter.

Tape transcribed by Sergeant L.St.Denis

End of report.

ATTACHMENT #3